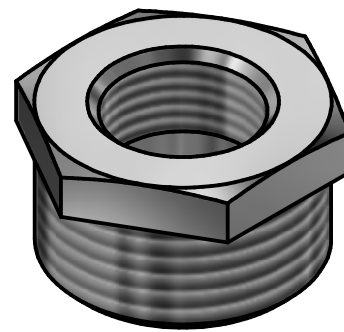
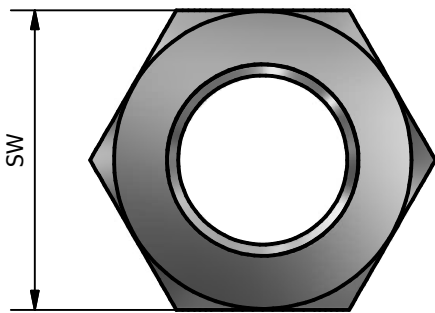
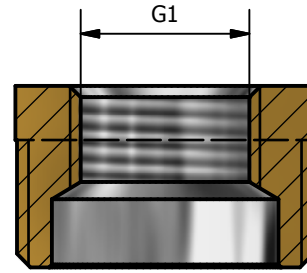
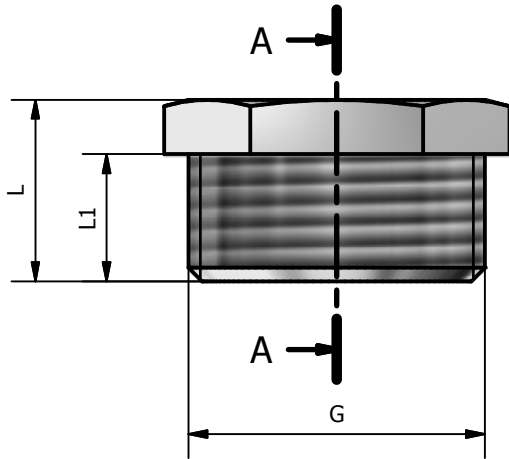


A-A ( 1.2 : 1 )



CODE	G	G1	L	L1	SW
114C 1418	1/4	1/8	13	8	14
114C 3818	3/8	1/8	15	10	17
114C 3814	3/8	1/4	15	10	17
114C 1218	1/2	1/8	17	11,5	21
114C 1214	1/2	1/4	17	11,5	21
114C 1238	1/2	3/8	17	11,5	21
114C 3414	3/4	1/4	19	13	27
114C 3438	3/4	3/8	19	13	27
114C 3412	3/4	1/2	19	13	27
114C 0138	1"	3/8	20	14	33
114C 0112	1"	1/2	20	14	33

CODE	G	G1	L	L1	SW
114C 0134	1"	3/4	20	14	33
114C P412	1"1/4	1/2	24	16	42
114C P434	1"1/4	3/4	24	16	42
114C P401	1"1/4	1"	24	16	42
114C P212	1"1/2	1/2	24	16	48
114C P234	1"1/2	3/4	24	16	48
114C P201	1"1/2	1"	24	16	48
114C P2P4	1"1/2	1"1/4	25	16	48
114C 0201	2"	1"	27,5	18	60
114C 02P4	2"	1"1/4	27,5	18	60
114C 02P2	2"	1"1/2	27,5	18	60

CONFORMITY	
1) DM 174 del 6 Aprile 2004	
2) UNI EN ISO 228	
3) UNI EN 1254-4	
4) UNI EN 9227	
5) UNI EN 2819	

WORKING PRESSURE MAX from 1/8 to 1"1/4	16 BAR
WORKING PRESSURE MAX from 1"1/2 to 2"	10 BAR
WORKING TEMPERATURE MAX	120°C

00	Prima emissione	Delaini M.	06/02/2011
Rev.	Nota Revisione	Approvatore	Data Approvazione
Toll Gen:	JS13	Stato sup.:	Cromato
Filetto:	ISO 228	Note tecniche:	
Peso lavorato:	Peso grezzo:	N° stampo:	
Materiale: CW 617N EN12165		Disegnatore: Delaini P.	Data: 06/02/2011
TDM Brass s.r.l via Artigiani, 7-9 25030 Maclodio BS Italy tel +39 030 9972217 fax 030 9787089 www.tdmbrass.it email info@tdmbrass.it			

Codice: 114C scheda

Descrizione: Brass hexagonal reduction M/F chrome plated